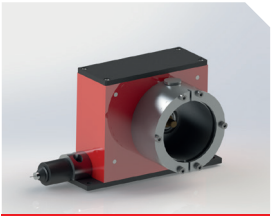




# DRAW WIRE SYSTEMS

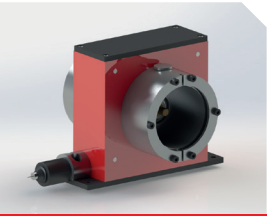
## LINEAR MEASUREMENT



**SERIE EM4 / EM4 FX**

90.1404 / 90.1404.FX

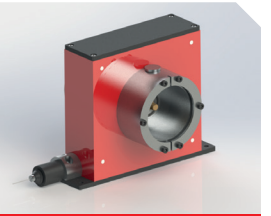
≤ 4.000 mm  
≤ 1 m/s  
200 mm ±0,06 / turn



**SERIE EM8 / EM8 FX**

90.1808 / 90.1808.FX

≤ 8.000 mm  
≤ 0,75 m/s  
250 mm ±0,06 / turn



**SERIE EM10 / EM10 FX**

90.1810 / 90.1810.FX

≤ 10.000 mm  
≤ 0,75 m/s  
300 mm ±0,06 / turn



**SERIE XT12**

XT12-10000 / XT12-15000

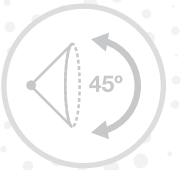
≤ 15.000 mm  
≤ 10 m/s  
300 mm / turn



**SERIE XT18**

XT18-20000 / XT18-50000

≤ 50.000 mm  
≤ 10 m/s  
500 mm / turn



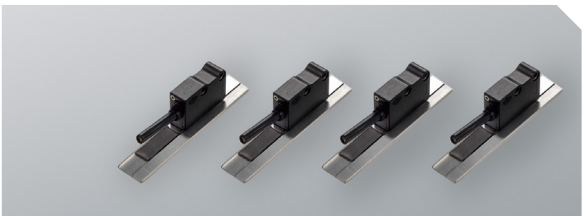
Draw wire systems allow to operate a rotary sensor of any type, for the measurement of linear distances:

- + Incremental Optical Encoder
- + Multiturn Absolute Optical Encoder
- + Multiturn Absolute Magnetic Encoder
- + Potentiometer



# MAGNETIC SENSOR SYSTEMS

## LINEAR MEASUREMENT



| SERIE       | MSL                 | MSM                | MSH                | MSV            |
|-------------|---------------------|--------------------|--------------------|----------------|
| Accuracy    | Incremental ± 50 µm | Incremental ± 8 µm | Incremental ± 6 µm | SIN/COS ± 8 µm |
| Pole pitch  | 5+5                 | 2+2                | 1+1                | 2+2            |
| Resolution* | 100 µm              | 10 µm              | 5 µm               | 0.5 µm         |
| Protection  | IP67                | IP67               | IP67               | IP67           |



| SERIE VIMS |                     |
|------------|---------------------|
| Accuracy   | Incremental ± 20 µm |
| Pole pitch | 2+2                 |
| Resolution | Programmable        |
| Protection | IP67 / IP43         |



| SERIE MSA  | SSI              |
|------------|------------------|
| Accuracy   | Absolute ± 15 µm |
| Pole pitch | 2+2              |
| Resolution | 10 µm            |
| Protection | IP67             |

(\* Other resolutions available, upon request.



BARCELONA | FRANKFURT | PARIS | MUMBAI | SHENZHEN

Tel. (00 34) 972 160 017  
info@encoderhohner.com  
www.encoderhohner.com

your encoder experts



“ your encoder experts  
— since 1983

With more than 40 years of experience, HOHNER AUTOMATION, the sole spanish optical encoders manufacturer, from its headquarter based in Breda (Girona province), designs, manufactures, commercialize and supports its customers in the development of industrial automation projects.

Our own departments of optical, mechanical and electronic manufacturing allow us to offer to our customers free engineering services with maximum efficacy and fast delivery time.

It is our flexibility and adaptability, coupled with our ethos of engineering, manufacturing excellence and quality concern, which has placed HOHNER AUTOMATION at the forefront of the best encoders manufacturers in the world.



| www.encoderhohner.com |

# INCREMENTAL ENCODERS

## SOLID SHAFT



# INCREMENTAL ENCODERS

## HOLLOW SHAFT



# ABSOLUTE ENCODERS

## SINGLETURN & MULTITURN



|   |   |  |  |
|---|---|--|--|
| <p><b>SERIE 10 / 10A</b></p> <p>≤ 50.000 ppr<br/>IP65 / IP67<br/>Cable or connector</p> <p>58 mm<br/>6..12 mm</p> | <p><b>SERIE 58 / 58S</b></p> <p>≤ 50.000 ppr / 2.500 ppr<br/>IP65 / IP67<br/>Cable or connector</p> <p>58 mm<br/>6 mm</p> | <p><b>SERIE 64 / 64S</b></p> <p>≤ 10.000 ppr / 2.048 ppr<br/>IP54<br/>Cable</p> <p>58 mm<br/>Conic 1:10</p>  | <p><b>SERIE 30 / 30A</b></p> <p>≤ 50.000 ppr<br/>IP65 / IP67<br/>Cable or connector</p> <p>90 mm<br/>12 mm</p> |
| <p><b>SERIE 10K INOX</b></p> <p>≤ 50.000 ppr<br/>IP69K<br/>Cable</p> <p>58 mm<br/>10 mm</p>                       | <p><b>SERIE 10I INOX</b></p> <p>≤ 50.000 ppr<br/>IP67<br/>Cable</p> <p>58 mm<br/>10 mm</p>                                | <p><b>SERIE 100 / 100 DUO</b></p> <p>≤ 5.000 ppr<br/>IP66<br/>Cable or connector</p> <p>115 mm<br/>11 mm</p> | <p><b>SERIE 30I INOX</b></p> <p>≤ 50.000 ppr<br/>IP67<br/>Cable</p> <p>90 mm<br/>12 mm</p>                     |
| <p><b>SERIE 66</b></p> <p>≤ 10.000 ppr<br/>IP64<br/>Cable or connector</p> <p>58 mm<br/>Thread M8</p>             | <p><b>SERIE 50</b></p> <p>≤ 5.000 ppr<br/>IP65<br/>Cable or connector</p> <p>50 mm<br/>6..10 mm</p>                       | <p><b>SERIE 36</b></p> <p>≤ 10.000 ppr<br/>IP65<br/>Cable or connector</p> <p>36,5 mm<br/>6 mm</p>           | <p><b>SERIE 26 / 27</b></p> <p>≤ 4.096 ppr<br/>IP64<br/>Cable</p> <p>24 mm<br/>4..6 mm</p>                     |
| <p><b>SERIE PR90</b></p> <p>≤ 65.536 ppr<br/>IP65<br/>Cable or connector</p> <p>58 mm<br/>6..10 mm</p>            | <p><b>SERIE 11</b></p> <p>≤ 2.500 ppr<br/>IP41<br/>Cable</p> <p>58 mm<br/>10 mm</p>                                       | <p><b>SERIE 20</b></p> <p>≤ 1.024 ppr<br/>IP54<br/>Cable</p> <p>58 mm<br/>6 mm</p>                           | <p><b>SERIE 21</b></p> <p>≤ 500 ppr<br/>IP41<br/>Cable</p> <p>40 mm<br/>6 mm</p>                               |

|  |  |  |   |
|--|--|--|---|
| <p><b>SERIE 59 / 59A / 59S</b></p> <p>≤ 50.000 ppr / 2.048 ppr<br/>IP65 / IP67<br/>Cable or connector</p> <p>58 mm<br/>10..14 mm</p> | <p><b>SERIE 19 / 19A</b></p> <p>≤ 50.000 ppr<br/>IP65 / IP67<br/>Cable or connector</p> <p>58 mm<br/>6..15 mm</p>  | <p><b>SERIE 77</b></p> <p>≤ 5.000 ppr<br/>IP65<br/>Cable or connector</p> <p>77 mm<br/>15..25 mm</p>               | <p><b>SERIE 80</b></p> <p>≤ 5.000 ppr<br/>IP65<br/>Cable or connector</p> <p>100 mm<br/>30..42 mm</p> |
| <p><b>SERIE 19K</b></p> <p>≤ 50.000 ppr<br/>IP69K<br/>Cable</p> <p>58 mm<br/>6..15 mm</p>  | <p><b>SERIE 100H / 100H DUO</b></p> <p>≤ 5.000 ppr<br/>IP66<br/>Cable or connector</p> <p>100 mm<br/>12..16 mm</p> | <p><b>SERIE 120</b></p> <p>≤ 10.000 ppr<br/>IP65<br/>Cable or connector</p> <p>120 mm<br/>45..60 mm</p>            | <p><b>SERIE 130M</b></p> <p>≤ 2.048 ppr<br/>IP68<br/>Connector</p> <p>134 mm<br/>16..36 mm</p>        |
| <p><b>SERIE 50HI INOX</b></p> <p>≤ 5.000 ppr<br/>IP67<br/>Cable</p> <p>55 mm<br/>6 mm</p>  | <p><b>SERIE 50H</b></p> <p>≤ 5.000 ppr<br/>IP65<br/>Cable or connector</p> <p>50 mm<br/>6..12 mm</p>               | <p><b>SERIE 22 / 22H</b></p> <p>≤ 10.000 ppr<br/>IP64 / IP50<br/>Cable or connector</p> <p>36,5 mm<br/>6..8 mm</p> | <p><b>SERIE 28</b></p> <p>≤ 4.096 ppr<br/>IP64<br/>Cable</p> <p>24 mm<br/>4..8 mm</p>                 |
| <p><b>SERIE PR90H</b></p> <p>≤ 65.536 ppr<br/>IP65<br/>Cable or connector</p> <p>58 mm<br/>10..15 mm</p>                             | <p><b>SERIE MIE</b></p> <p>1 ppr<br/>IP67<br/>Cable</p> <p>54 mm<br/>15 mm</p>                                     | <p><b>SERIE MR</b></p> <p>1 ppr<br/>IP67<br/>Cable</p> <p>105..160 mm<br/>11..19 mm</p>                            | <p><b>SERIE 22M</b></p> <p>≤ 512 ppr<br/>IP65<br/>Cable</p> <p>36,5 mm<br/>10..12 mm</p>              |

### SSI ABSOLUTE ENCODERS

> Singleturn resolution up to 21 bits  
> Multiturn resolution up to 38 bits  
> Solid, blind hollow or hollow shaft  
> Binary, Gray codes. Configurable via cable or switch  
> Up to IP67. Cable or connector output

36..90 mm

**SERIE E36/E58 SSI**

Singleturn ≤ 13 bits  
Multiturn ≤ 24 bits  
Protection up to IP65  
Connection by cable or connector

### ABSOLUTE + INCREMENTAL ENCODERS

> Singleturn resolution up to 19 bits  
> Incremental resolution 2.048 SIN/COS  
> BISS-C or SSI + SIN/COS or SIN/COS + SIN/COS  
> Solid, conical, blind hollow or hollow shaft  
> Up to IP65. Cable or connector output

58 mm

SSI + BISS INTERFACE

### ANALOG ABSOLUTE ENCODERS

> Analogical output 4..20mA, 0..20mA, 0..10V or 0..5V  
> Singleturn or multiturn, up to 16 bits resolution  
> Solid, blind hollow or hollow shaft  
> Configurable option of measuring range, reset or direction  
> Protection up to IP67. Cable or connector output

58..90 mm

### PARALLEL ABSOLUTE ENCODERS

> Singleturn or multiturn  
> Solid or hollow shaft  
> Configurable: reset or direction  
> Protection up to IP67. Cable or connector output

58..90 mm

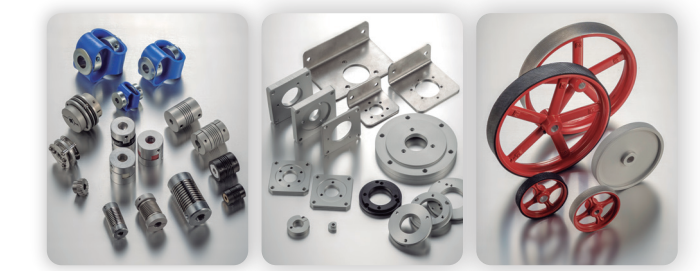
### ABSOLUTE ENCODERS FIELDBUS

> Hohner Automation is offering all the Fieldbus encoders, Profibus, Profinet, Devicenet, CanOpen, CANlift, EtherCAT, EtherNet/IP, Interbus, Modbus/TCP, TCP/IP, Powerlink

PROFIBUS, PROFINET, Devicenet, EtherNet/IP, CANopen, EtherCAT

# ACCESSORIES

- > Flexible couplings
- > Coupling flanges
- > Mounting bells
- > Connectors
- > Measuring wheels
- > Antitotation systems
- > Pre-assembled cables
- > Support angles



① RANGE OF TEMPERATURE -20°C..+85°C / OPTIONAL -40°C..+100°C POWER SUPPLY 5V / 11..30V / OPTIONAL 5..24V